



Leadenhall St.

Re-Imagined High Quality Offices
Offered in a CAT A or Newly Fitted Out Condition
from 6,610 sq ft to 14,310 sq ft



A high quality office scheme located in a prime EC3 location. Restored to the highest standard by renowned architects Foggo Associates, the designs bring contemporary verve and feel to a classic building, creating a superb working environment.

Stylishly updated to include a newly remodelled entrance hall, 88 Leadenhall Street offers 14,310 sq ft of available accommodation, with excellent ceiling heights, bright open floors and characterful features.

RESTORED TO THE HIGHEST
STANDARD BY RENOWNED
ARCHITECTS FOGGO
ASSOCIATES, THE DESIGNS
BRING A CONTEMPORARY
FEEL TO A CLASSIC BUILDING.





A STYLISH REMODELLED
ENTRANCE HALL
FEATURING INFORMAL
BREAK-OUT AREAS

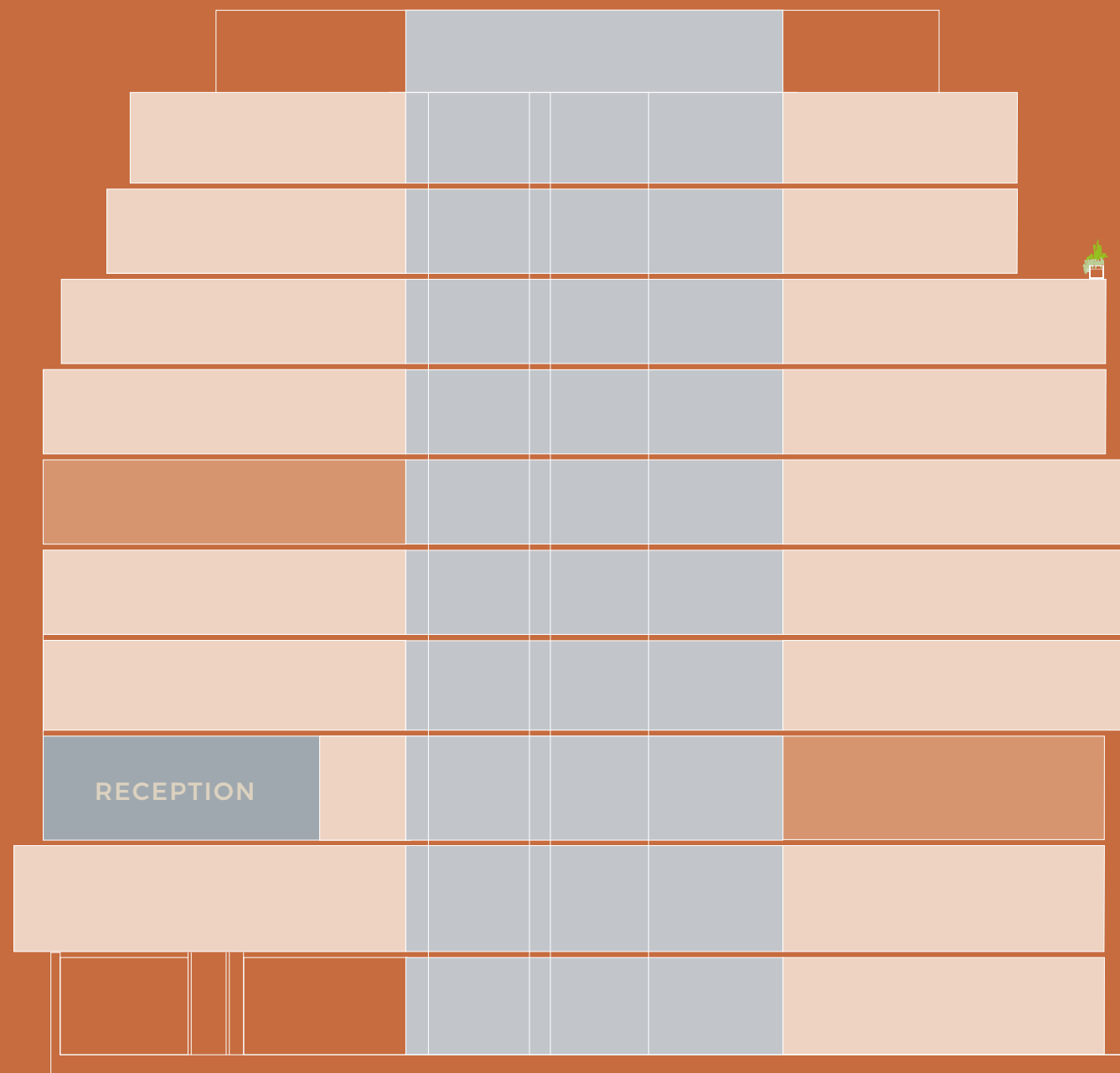


ENTRANCE HALL SNUG
WITH COFFEE FACILITIES

14,310 SQ FT OF HIGH QUALITY ACCOMMODATION WITH CHARACTERFUL FEATURES.

THE SPACE CAN BE OFFERED IN A CAT A OR NEWLY FITTED OUT CONDITION.

FLOOR	SQ FT
SEVENTH	7,700
SIXTH (WITH TERRACE)	LET
FIFTH	LET
FOURTH (BURY ST) (LEADENHALL ST)	LET LET
THIRD (BURY ST) (LEADENHALL ST)	LET 6,610
SECOND	LET
FIRST	UNDER OFFER
GROUND (BURY ST) (LEADENHALL ST)	LET UNDER OFFER
LOWER GROUND (BURY ST) (LEADENHALL ST)	UNDER OFFER UNDER OFFER
BASEMENT	LET
TOTAL	14,310



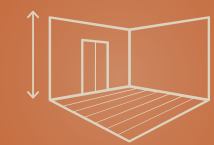
New contemporary reception



New LED lighting



Fan coil air conditioning



New raised floors



Shower facilities



Bike racks



4 passenger lifts

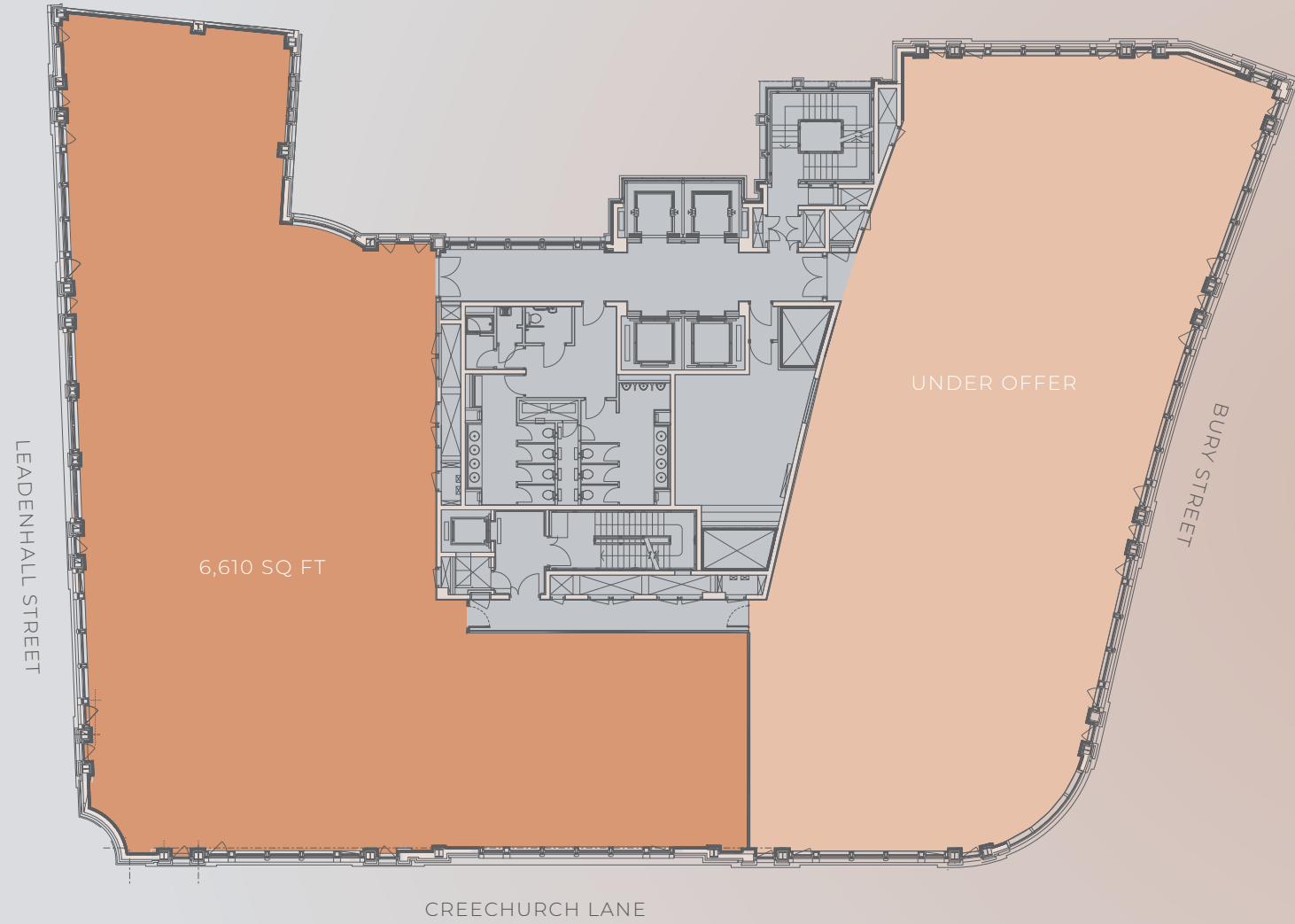


Loading bay



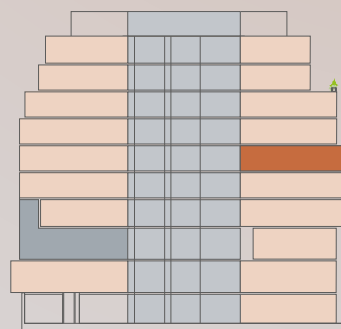
BRIGHT OPEN FLOORS WITH
EXCELLENT NATURAL LIGHT

THIRD 6,610 SQ FT

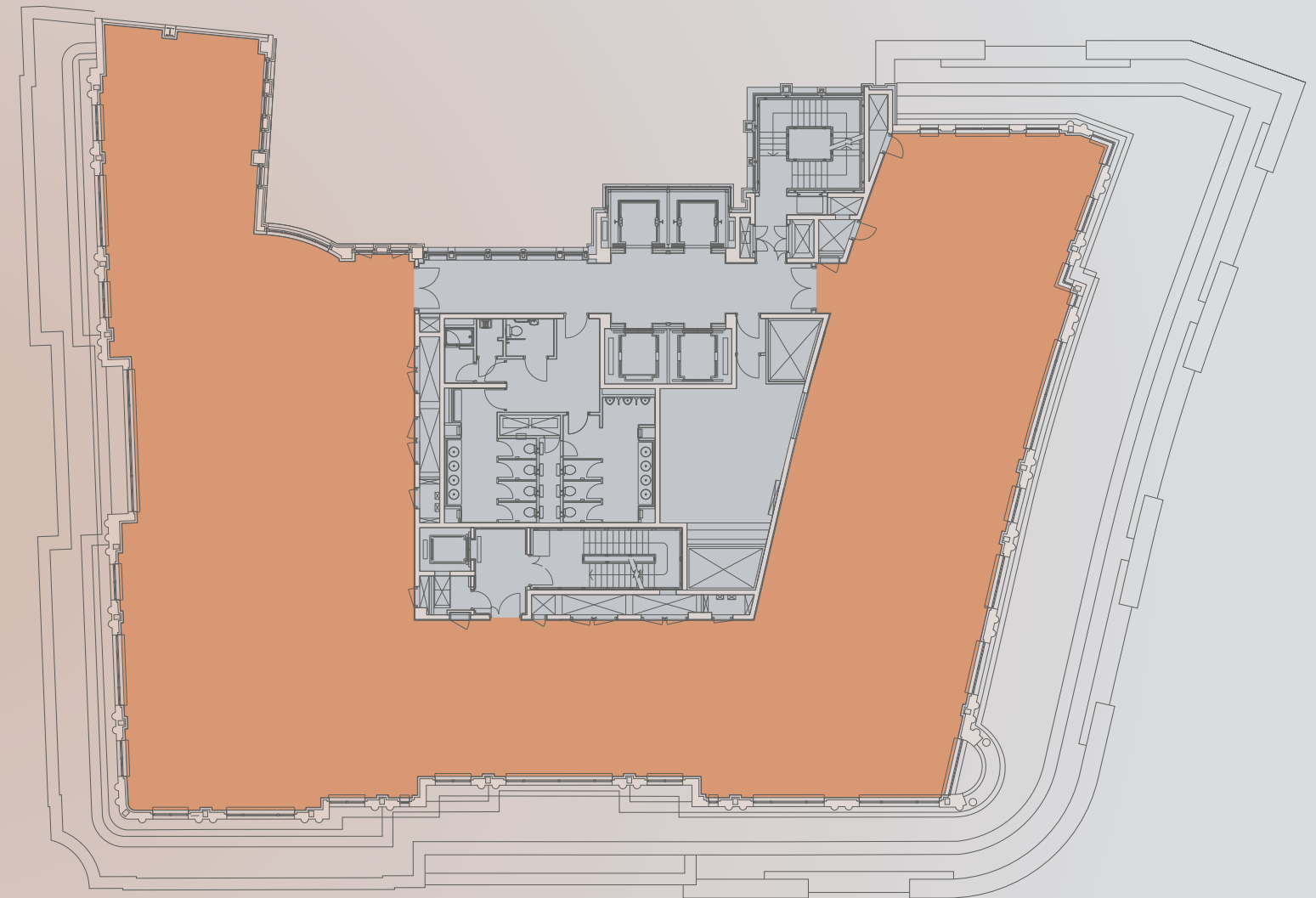


KEY
 Office
 Core

Floor plans not to scale, for identification purposes only

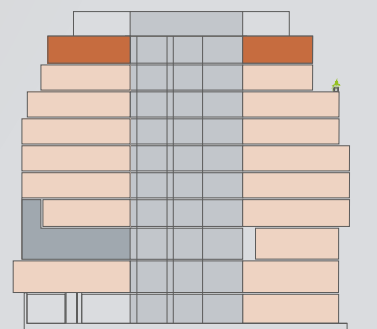


SEVENTH 7,700 SQ FT



KEY
 Office
 Core

Floor plans not to scale, for identification purposes only





SPACE PLANNING (TYPICAL MID FLOOR)

CREATIVE LAYOUT



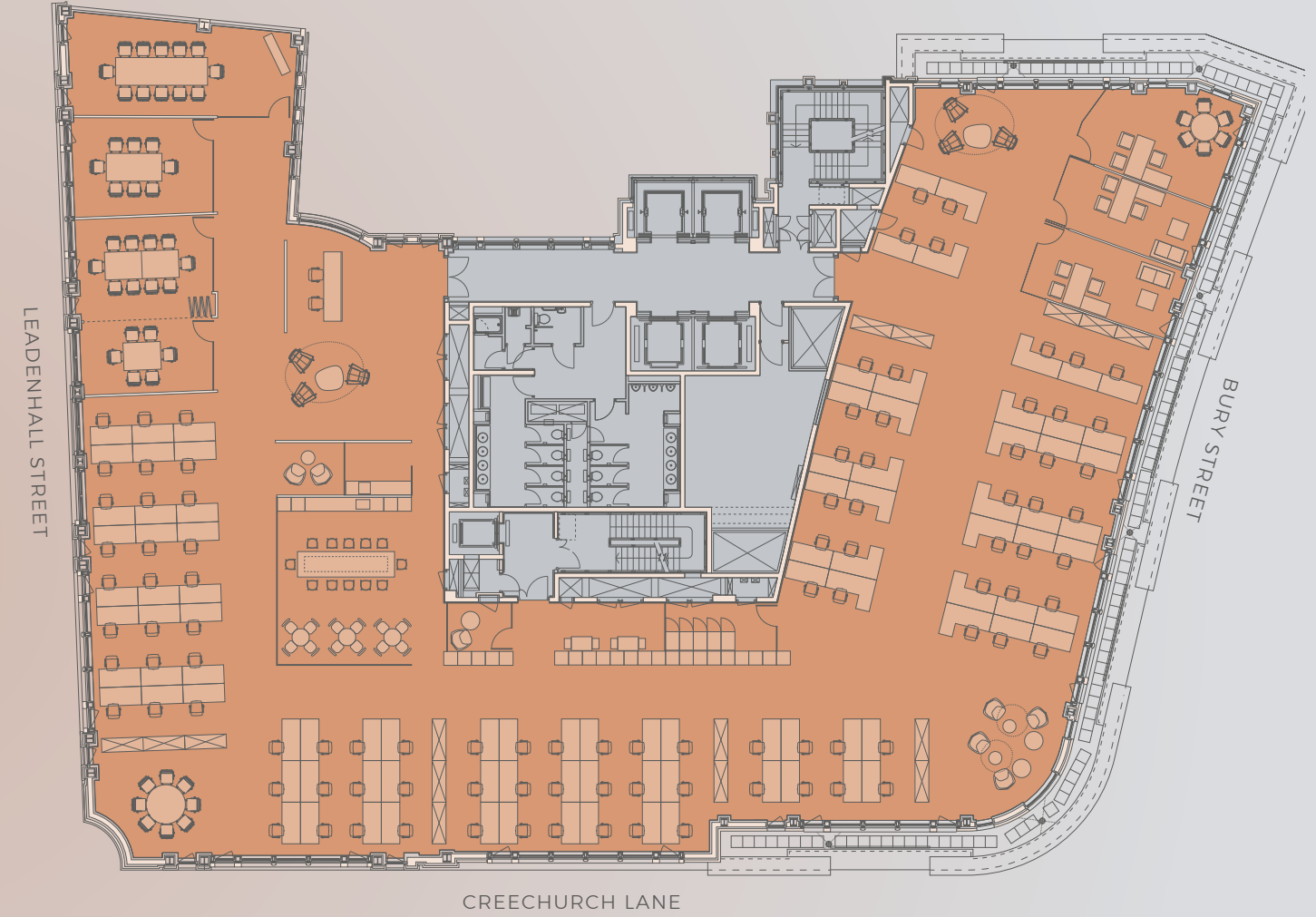
KEY

Office
Core

Floor plans not to scale, for identification purposes only

SPACE PLANNING (TYPICAL MID FLOOR)

CORPORATE LAYOUT



KEY

Office
Core

Floor plans not to scale, for identification purposes only

4th Floor - 11,557 sq ft

Total Headcount	98
Management Offices	4
Workstations	58
Hot Desks	14
Working Seatings	8
Working Hubs	16
Meeting Spaces	
Auditorium	1
Meeting Room (10p)	1
Meeting Room (6p)	1
Informal Meeting	1
Booths (2)	1
Phone Booths (1)	1

Collaborative Space

Breakout / Assembly Point	5
Informal Meeting Seating	4
Dynamic Area	1
Ancillary Areas	
Reception Desk	1
Waiting Area	1
Tea Point / Breakout Area	2
Coats Storage Area	1
Print Hub	1
Comms Room	1

4th Floor - 11,557 sq ft

Total Headcount	104
Management Offices	3
Workstations	99
Meeting Spaces	
Boardroom (12p)	1
Meeting Room (10p)	1
Meeting Room (8p)	1
Meeting Room (6p)	1
Informal Meeting	1
Booths (2)	1
Phone Booths (1)	1

Collaborative Space

Breakout / Assembly Point	3
Informal Meeting Seating	3
Dynamic Area	1
Ancillary Areas	
Reception Desk	1
Waiting Area	1
Tea Point / Breakout Area	2
Coats Storage Area	1
Print Hub	1
Comms Room	1

WITH A WIDE CHOICE OF UNDERGROUND LINES AND THE ELIZABETH LINE NEARBY, THIS IS QUITE SIMPLY A FIRST CLASS TRANSPORT HUB

WALKING TIMES

The Lloyd's Building	1 min
Fenchurch Street station	1 min
Aldgate station	2 mins
Tower Hill station	5 mins
Monument station	8 mins
Bank station	8 mins
Liverpool Street station	10 mins

SANTANDER DOCKING STATION

Jewry Street, Aldgate	1 min
Houndsditch, Aldgate	2 mins
St. Mary Axe, Aldgate	2 mins

LONDON UNDERGROUND

<i>From Liverpool Street station (10 mins)</i>	
King's Cross St Pancras	9 mins
Oxford Circus	10 mins
Bond Street	10 mins
Waterloo	12 mins
Euston	15 mins
Paddington	23 mins

AIRPORTS

<i>From Liverpool Street station (10 mins)</i>	
Stansted Airport	48 mins
Gatwick Airport	50 mins
Heathrow Airport	53 mins

ELIZABETH LINE (CROSSRAIL)

When the full route opens, an Elizabeth line service every two and a half minutes at peak times will allow passengers to travel all the way through to Paddington (10 mins), Heathrow (35 mins) or Reading in the west (61 mins) and Shenfield (42 mins) or Abbey Wood in the east (18 mins).



Source: Google Maps, tfl.gov.uk, crossrail.co.uk

Home to the vibrant Leadenhall Market, Leadenhall Street provides a unique and historic location and is home to some of the largest and evolving names in the insurance, financial and TMT markets.

A wide range of cafés, restaurants and bars are on the doorstep, but an equally short stroll in any direction will reveal a variety of exciting and ever evolving areas - from the fine dining of Bank and Spitalfields, to the hip new venues in Aldgate and waterside venues of St. Katharine Docks.



Association Coffee



Leadenhall Market

Leisure

- 1 Rebel
- American Golf
- Gymbox
- The Royal Exchange
- Sky Garden
- Third Space Gym
- Virgin Active



1Rebel gym

Hotels

- Andaz London
- Threadneedles
- DoubleTree by Hilton
- Four Seasons Hotel



The Alchemist

Walter and Monty



THE BEST OF LONDON IS ON YOUR DOORSTEP

Restaurants & Bars

- The Alchemist
- Natural Kitchen
- Blacklock
- Duck & Waffle
- The Folly
- The Mercer
- The Ned
- Pizza Pilgrims
- Temper
- 14 Hills
- Bar20 at Birleys
- Brewdog
- Farmer J
- Omino
- Chamberlains
- Bob Bob Cité

Cafés

- Association Coffee
- Breakfast Club
- The Good Yard
- Nusa Kitchen
- Secret Frog Coffee Co.
- Black Sheep Coffee
- Beany Green
- Joe & the Juice

Black Sheep Coffee



88leadenhallstreet.com

NEWTON
PERKINS



Jonathan Beilin
jbb@newtonperkins.com
020 7456 0727
07967 392 016

James Gillett
jgillett@savills.com
020 7409 8961
07972 000 250

Chris Sutcliffe
crs@newtonperkins.com
020 7456 0706
07970 831 250

David Law
dlaw@savills.com
020 7409 8922
07870 555 911

Jade Dedman
jade.dedman@savills.com
020 7330 8617
07807 999 783

Architects and Engineers

Foggo Associates

Important Notice: Newton Perkins, Savills, and their client give notice that:

1. They are not authorised to make or give any representations or warranties in relation to the property either here or elsewhere, either on their own behalf or on behalf of their client or otherwise. They assume no responsibility for any statement that may be made in these particulars. These particulars do not form part of any offer or contract and must not be relied upon as statements or representations of fact. 2. Any areas, measurements or distances are approximate. The text, photographs and plans are for guidance only and are not necessarily comprehensive. It should not be assumed that the property has all necessary planning, building regulation or other consents and Newton Perkins and Savills have not tested any services, equipment or facilities. Potential occupiers and/or purchasers must satisfy themselves by inspection or otherwise. June 2023.

Designed and produced by Graphicks | 020 3435 6952 | Graphicks.co.uk. Photography by joas.co.uk