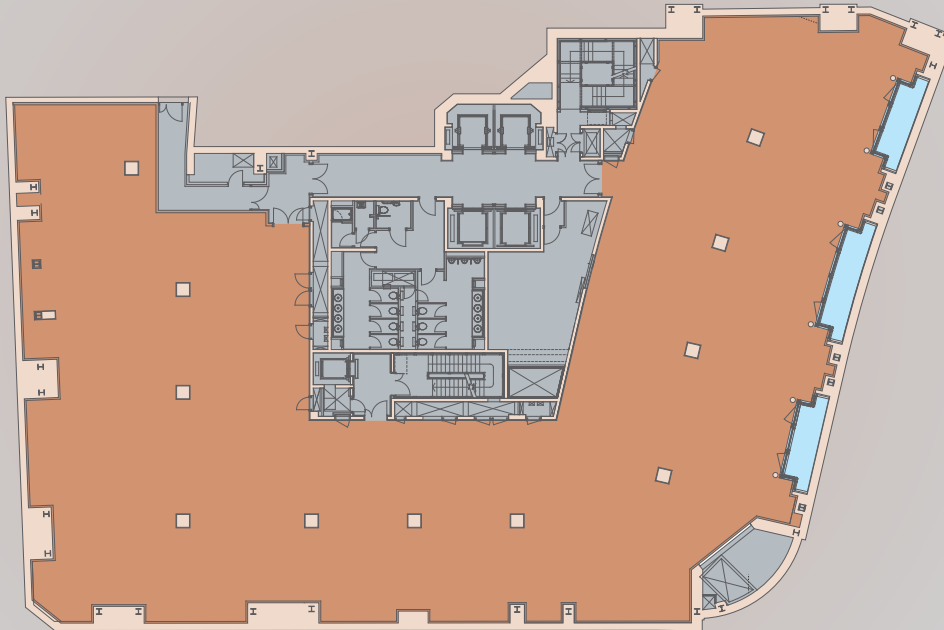


Leadenhall St.

Floorplans

# LOWER GROUND

11,428 SQ FT



KEY


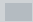
Office
Core
Lightwell

# BASEMENT

4,828 SQ FT

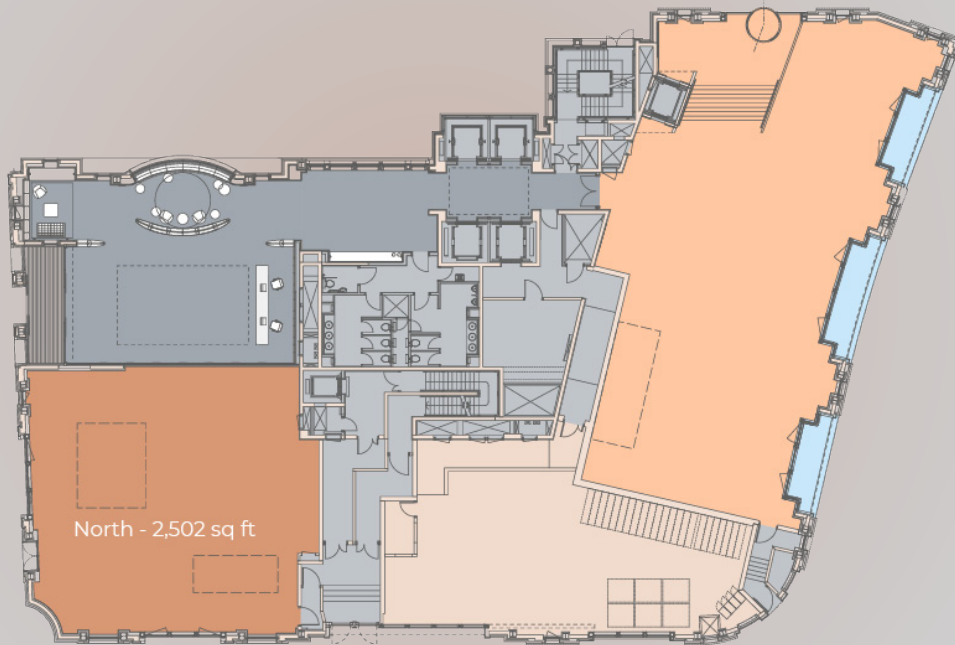


## KEY

-  Office
-  Core

# GROUND (NORTH)

3,990 SQ FT

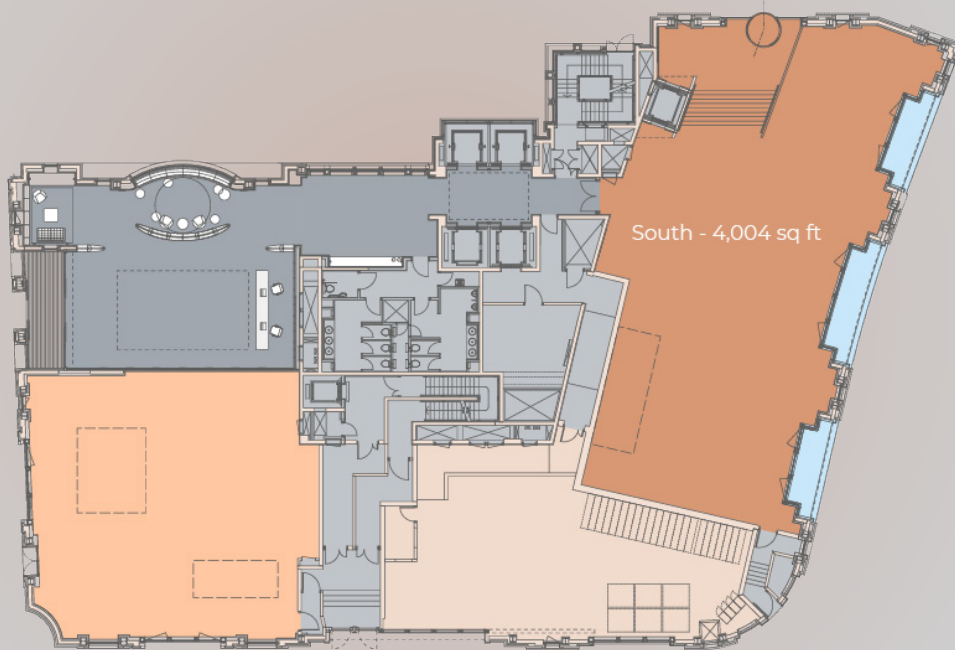


## KEY

- North Office
- South Office
- Core
- Lightwell

# GROUND (SOUTH)

2,504 SQ FT



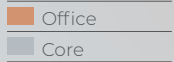
KEY

North Office
South Office
Core
Lightwell

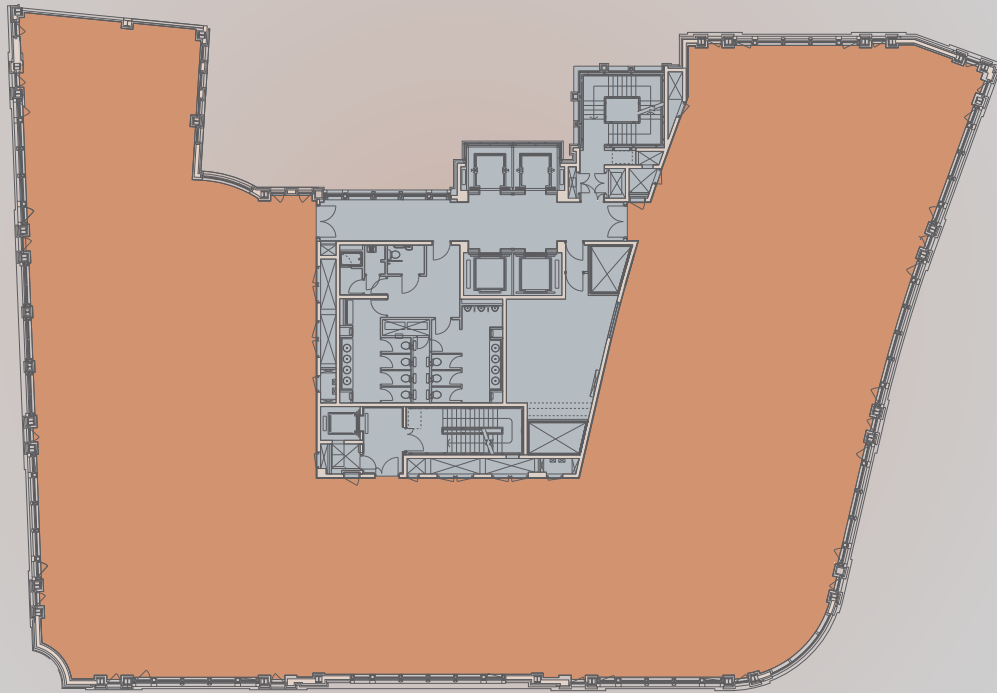
FIRST  
12,400 SQ FT



KEY



THIRD  
12,602 SQ FT



KEY

- Office
- Core

FOURTH  
11,557 SQ FT



KEY

- Office
- Core



FIFTH  
11,274 SQ FT


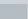



- KEY
- Office
  - Core

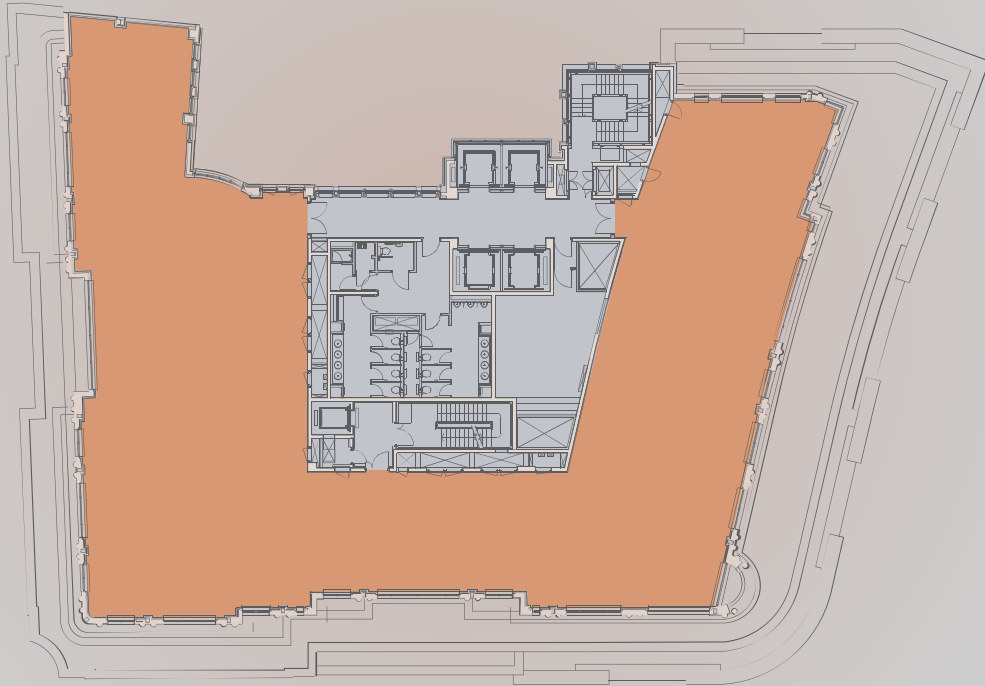
SIXTH  
8,368 SQ FT





KEY

	Office
	Core
	Terrace

SEVENTH  
7,700 SQ FT



KEY

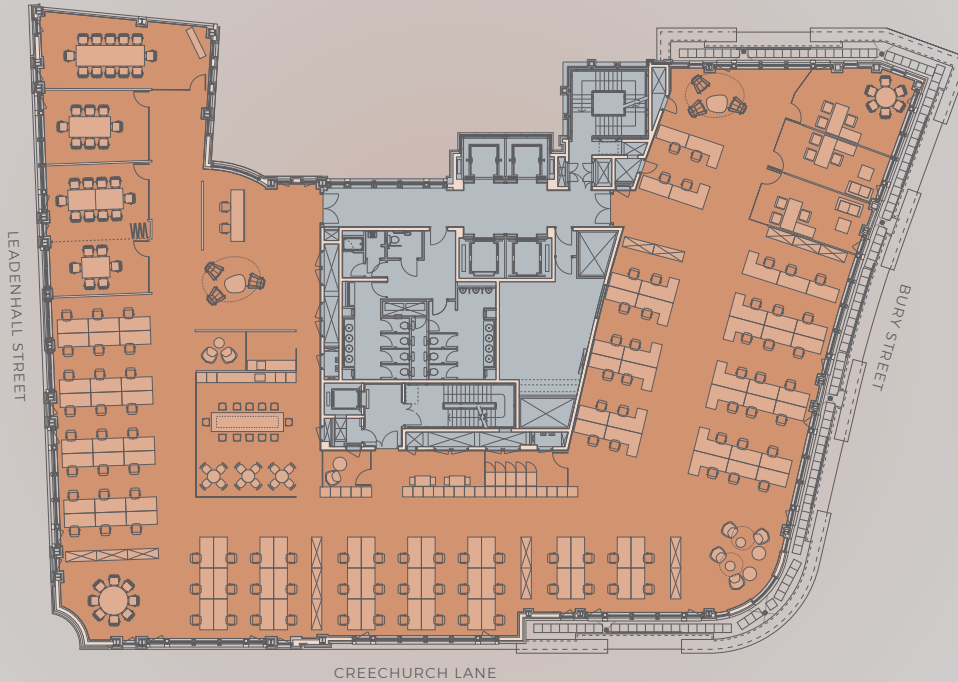
	Office
	Core

# FOURTH - 11,557 SQ FT CREATIVE SPACE



- KEY
- Office
  - Core

# FOURTH - 11,557 SQ FT CORPORATE SPACE



## KEY

- Office
- Core