

Leadenhall St.


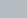
Floorplans

# BASEMENT

4,307 SQ FT

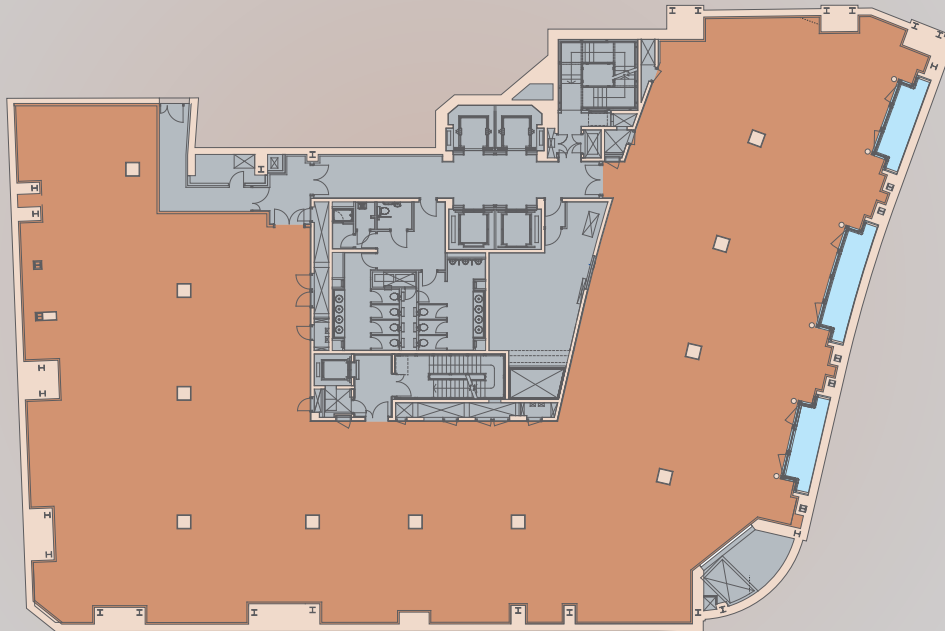


KEY

	Office
	Core

# LOWER GROUND

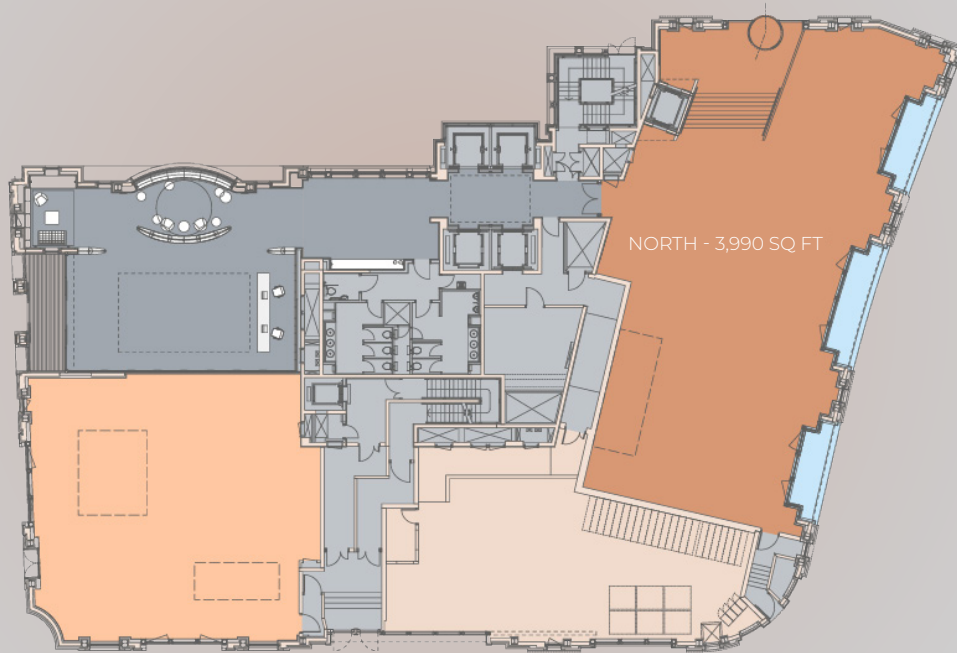
10,947 SQ FT



- KEY
- Office
  - Core
  - Lightwell

# GROUND (NORTH)

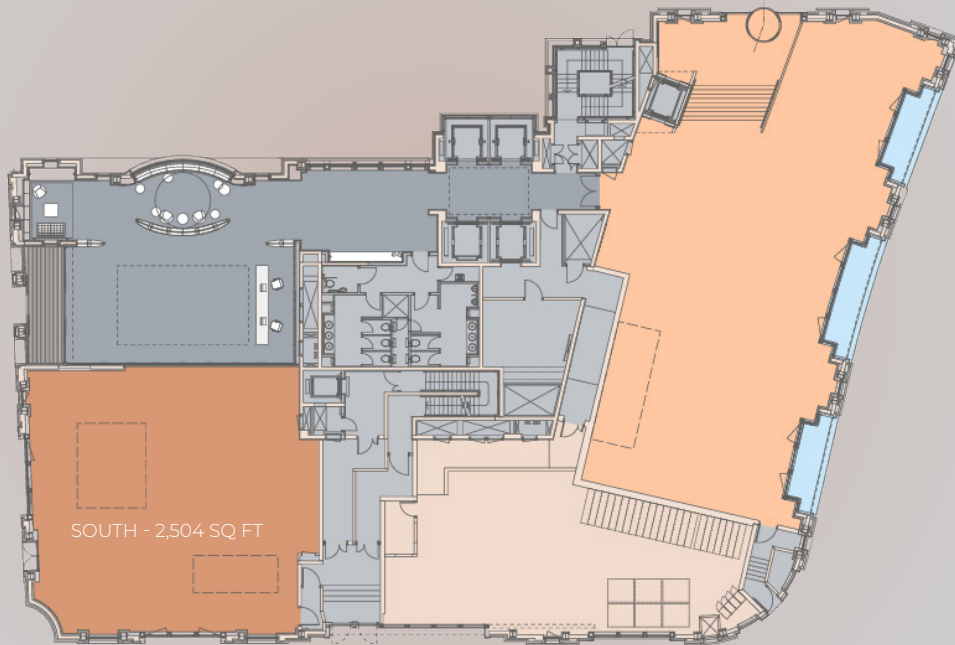
3,990 SQ FT



## KEY

- North Office
- South Office
- Core
- Lightwell

# GROUND (SOUTH) 2,504 SQ FT





KEY

Light orange	North Office
Dark orange	South Office
Grey	Core
Light blue	Lightwell

FIRST  
12,400 SQ FT




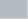
KEY

-  Office
-  Core

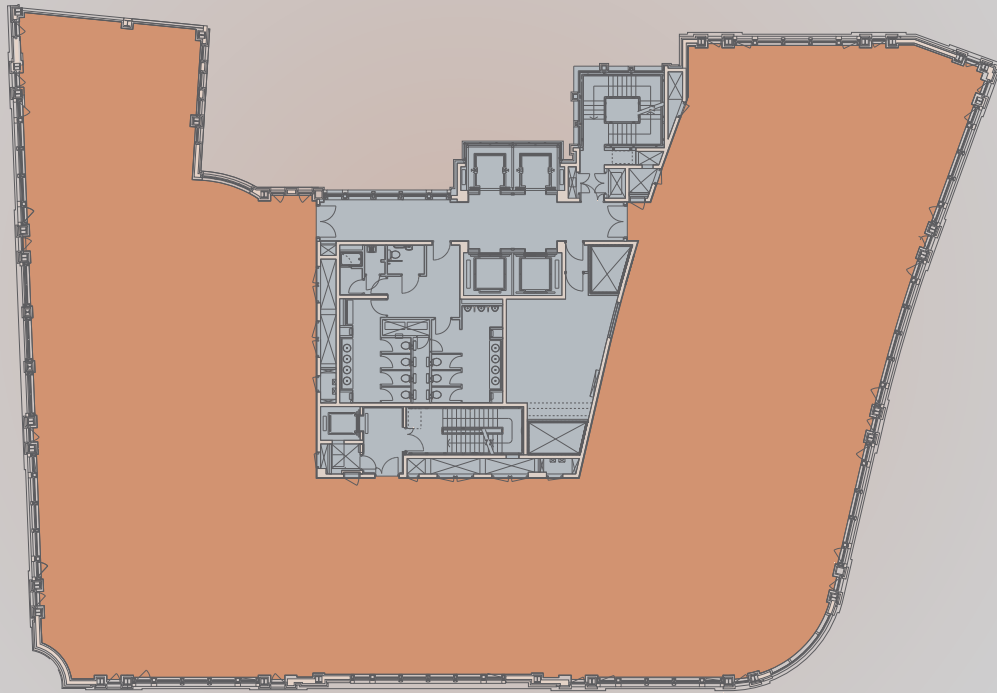
# SECOND UNDER OFFER



## KEY

-  Office
-  Core

THIRD  
12,602 SQ FT



KEY

- Office
- Core



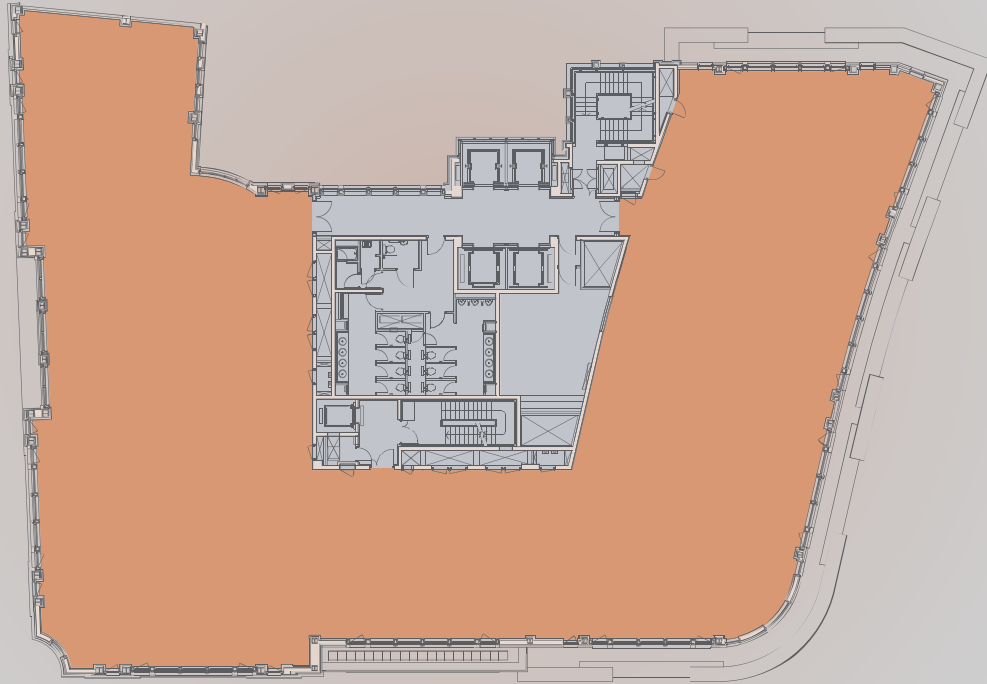
FOURTH  
11,557 SQ FT



KEY

- Office
- Core

FIFTH  
11,274 SQ FT


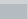



- KEY
- Office
  - Core

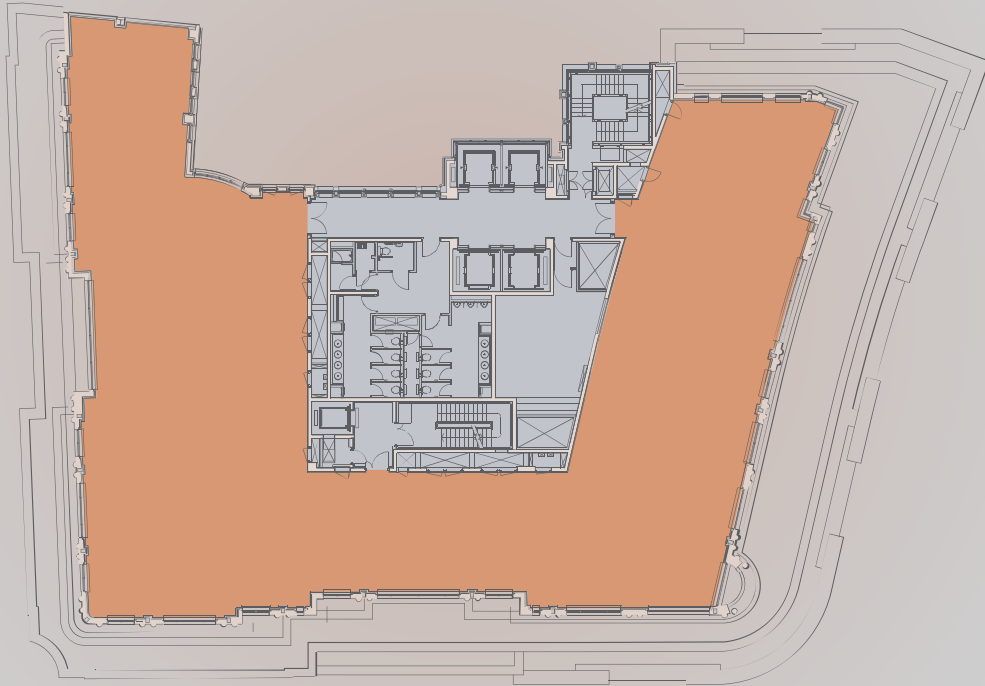
# SIXTH UNDER OFFER





KEY

	Office
	Core
	Terrace

SEVENTH  
7,700 SQ FT



KEY

	Office
	Core

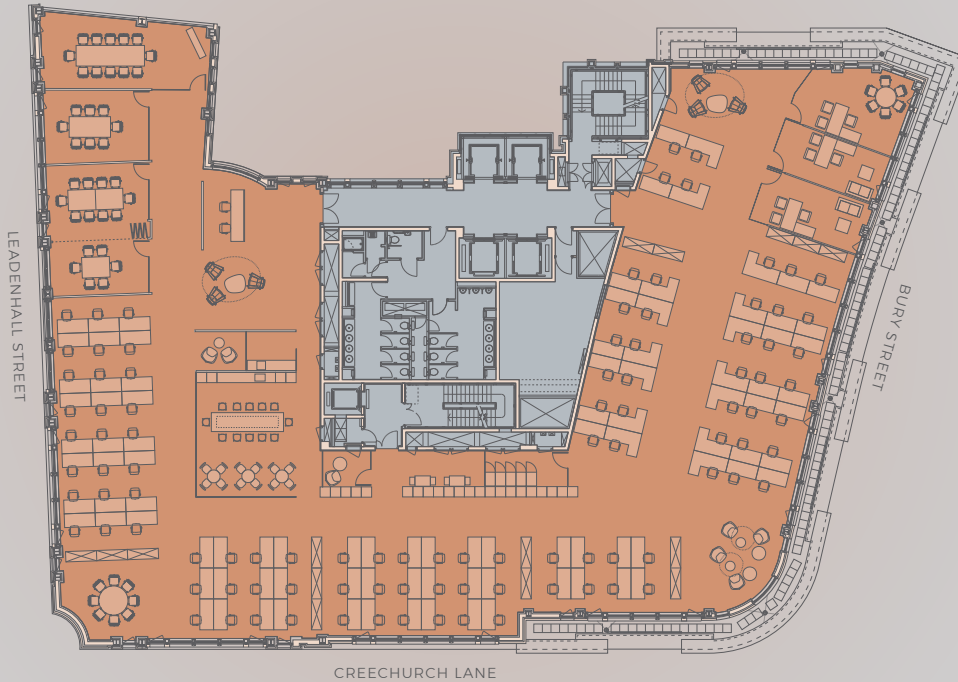
# FOURTH - 11,557 SQ FT CREATIVE SPACE



## KEY

- Office
- Core

# FOURTH - 11,557 SQ FT CORPORATE SPACE



## KEY

- Office
- Core